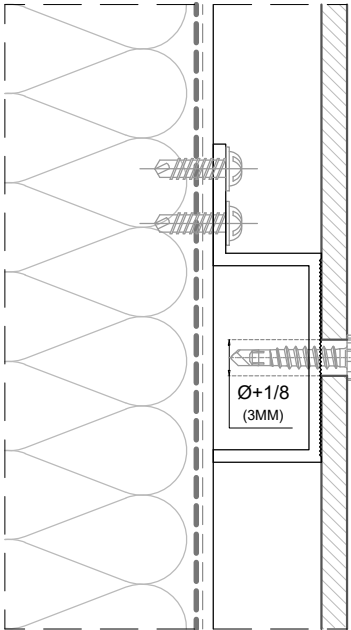


Measurements in inches are approximated. Real measurements in mm.  
The updated version of this present installation detail can be found on the PARKLEX PRODEMA web.  
Panel sizes and maximum distances in technical catalogue.

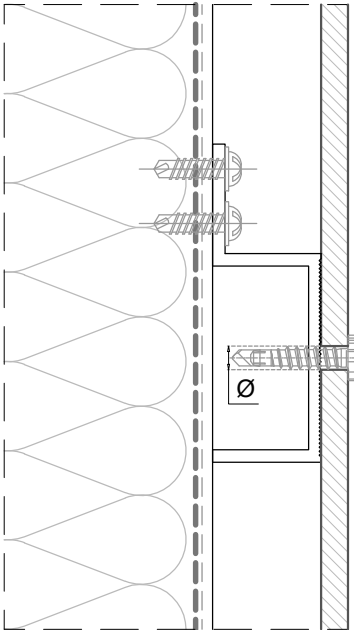
DO NOT OVERTIGHTEN THE SCREW!

Torque recommendations for SX3 screw:

5Nm to fasten the panel on a 7/64" thick aluminum channel



Floating point



Fixed point

FIXING DETAIL

MEASURES: INCH

A-A' FAÇADE BASE	H-H' INSIDE CORNER (OPEN JOINT)
B-B' PARAPET CAP	I-I' OUTSIDE CORNER (OPEN JOINT)
C-C' HORIZONTAL JOINT	J-J' DOOR HEAD
D-D' VERTICAL JOINT	K-K' DOOR JAMB
E-E' WINDOW SILL	L-L' VENTILATION DROPPED CEILING
F-F' WINDOW JAMB	M-M' SIDE VENTILATION DROPPED CEILING
G-G' WINDOW HEAD	

**PARKLEX PRODEMA**  
www.parklexprodema.com

PRODUCT

GRCLAD

PLAN#

GRC1-01-B-G.P.

SYSTEM

EXPOSED SCREW FIXING ON ALUMINUM,  
WITH INSULATION

TITLE

GENERAL PERSPECTIVE

DRAWN BY

Mikel Maritxalar

APPROVED BY

Maialen Irastorza

DATE

02/2024

PAGE

1 / 18